



troglotech

Ultimate underground technology



TROGLOTECH MAJOR PRODUCTS 2023

BATTERY POWERED AUTO CRAWLER SYSTEM



Troglotech Major Products 2023



TROGLOTECH TRACTOR SYSTEM COMBINATIONS

Welcome to the Troglotech battery-operated Crawler System. We are the first in the market to site the Lithium-Ion battery actually in the Crawler. This allows us to use a robust main cable of 4mm in diameter which means less power consumption, no power losses in the cable. It also means we can provide a system to inspect 39" (1000mm) mainlines with a portable automatic drum weighing 20Kg and 300M of cable

Troglotech Crawler Systems can be supplied with an **AUTO** Drum or **MANUAL** Drum.

The Auto Drum releases cable and returns the cable and crawler automatically

The Manual Drum releases cable automatically but the operator has to manually pull in the cable (using the handle on the side of the drum) whilst the crawler reverses. A reversing camera and rear lights are automatically switched ON in reverse.

- 300M cable as standard
- Motorised Elevator (Riser)
- Versatile 4" - 39" operation
- No mains supply needed
- No generator needed
- Reversing Camera
- Pan & Tilt Camera
- WiFi Connectivity
- Direct-to-customer reporting
- Steerable
- Full Days Operation
- Recording to SD-Card
- Text Writer
- Daylight LCD Display
- Cable Layering
- Accurate Distance Counter
- Lightweight (16Kg)
- Wincan Compatible
- Proven Reliability
- Waterproof (IP67 / IP68)
- Inclinometer
- Anti-turn-over system
- Fully Portable
- Zero Emissions
- Silent operation





TROGLOTECH TRACTOR SYSTEM COMBINATIONS

Although the Crawler System can be provided with any combination of wheels, batteries and additional lights. we suggest two combinations. Both versions use the same Crawler Body and Cable Drum

Our **Standard Crawler System** is supplied with the small wheel sets for 4" - 8" (100mm - 200mm) pipe surveys - the crawler will also negotiate up to 12" pipes but will not be centred

Our **Large Crawler System** is supplied with a large additional light-head, wheel extensions and Pneumatic tyres for centring in larger pipes. With the optional Elevator the crawler is centred in 39" (1000mm) pipes

The optional Elevator can only be used with the Large Crawler System

The same Pan & Tilt camera head is used on both combinations and can be removed and used on our Push-rod systems with the Rod Adaptor. The Pan & Tilt camera also enables Digital Measurements to be made of pipe deformations and other artifacts

The complete range of pipe sizes that the Crawler can be centred in is 4" - 39" (100mm—10000mm)

The Crawler can be STEERED and used on flat surfaces such as ductwork and is often used for remote viewing of dangerous areas that cannot be accessed using any other method.

All our designs (including above-ground equipment) is WATERPROOF to a minimum of IP67, below-ground equipment is WATERPROOF to IP68 (7-Bar working, 11-Bar safe)

troglotech Ultimate underground technology



troglotech T815 battery-powered crawler system



SUPPLIED WITH 300M AUTO CABLE DRUM OR MANUAL CABLE DRUM



The Picture above shows the **AUTO Cable Drum** assembly as supplied with 300M of high-strength 4mm cable, Lithium Ion Power Source, Display Unit, DVR and a High Power 3-Phase Motor/Gearbox with automatic operation via the standard keyboard. The Cable Drum is supplied ready to be used.

The **MANUAL Cable Drum** has identical facilities but does not have the High Power 3-Phase Motor/Gearbox and retrieval of the cable is performed manually using the folding handle



ELEVATOR FOR CRAWLER



The Picture above shows the Elevator fitted to our T815 Crawler. The Elevator requires that the Crawler is fitted with Wheel Extensions, Large Battery and additional Lighthouse. The Elevator has no trailing wires, no leadscrews and is operated from the standard keyboard. This allows our camera to be centred in 500mm—900mm (20" - 36") pipes. It is compatible with all existing Troglotech Crawlers (a software update for the crawler may be required FOC)



STANDARD PAN & TILT CRAWLER - READY FOR USE



6 x 4 " Wheels



4 x 6 " Wheels



4 x 8 " Wheels



6 x Wheel
Fixings



4 x Large
Wheel Fixings



Standard Battery x 2



DC Charger



AC Charger



Tractor Body



T812 Camera Head



Carry Case



Pressure Pump



T850 AUTO DRUM

Manual or Auto Drum



Wheel Removal Tool



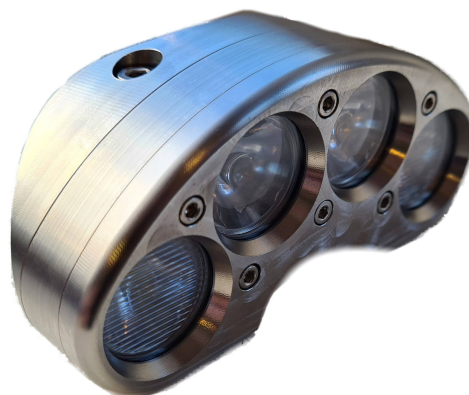
Lifting Device



LARGE PAN & TILT CRAWLER AS STANDARD PLUS



Large Battery Pack



Large Lighthouse



4 x Large Pneumatic Wheels



4 x Small Pneumatic Wheels



4 x Large
Wheel Fixings



2 x Wheel Extensions



Wrench



T804 Troglprobe Portable Pushrod Inspection System

Widely recognised as the worlds most robust and reliable pushrod system, the T804 is fully water-proof with all housings machined from solid materials and is completely safe using battery power. 2018 saw the introduction of WiFi connectivity and high-definition recording to SD-Card.

The Full T804 Pushrod System (part number TC80430011) comprises: 61M of Rod, Display Unit, integral DVR, Rod-Counter, Textwriter Keyboard, Power Cell, T800 camera, skid set plus a mains charger, as pictured below, is supplied ready for immediate use.



Included in the Full T804 System Package:

- T800 auto-uprighting camera head
- Integral SD-Card Digital Video Recorder
- 9-page Textwriter with rod-counter, time & date and various display modes
- Power Cell - up to 8-hours use from a single charge
- High-Brightness monitor - designed for daylight use with sun-shade
- Full skid set for 3", 4" and 6"
- Mains Charger with country-specific Mains Lead
- Full User Manual
- 61 Metres (200 feet) of reinforced, flexible rod





POPULAR UPGRADES

WiFi System Accessory TC80461011

Our WiFi accessory adds a new dimension to the T804 system - direct connection to any smart device such as smart-phones and tablets.

The Wifi system transmits high-definition video and on-screen data (such as rod counter, text, time & date). Our WiFi system means that video, stills and reports can be sent directly to the customer while still on-site.

The Wifi unit simply clips to the T804 frame and is connected the the Display Unit with a 0.6M cable. Obviously the system is completely waterproof to IP67

Pushrod and Crawler Use



T710 High-Definition Camera + Rod

T710 1" camera and 20M rod

Extend the capabilities of your T804 system with the addition of the T710 1" camera and 20M (66 feet) of highly-flexible rod. This upgrade includes a smaller coiler cage that fits within the T804 coiler cage.

The T710 1" camera upgrade includes the small coiler cage, the T710 camera, 20M (66 feet) of highly-flexible rod, ball-skid and all terminations.

The rod is a new Troglotech design. It has a high resin-content fibre-glass core that provides both flexibility and strength, the outer is highly wear-resistant and low-friction.

Pushrod Systems Only



T710 High-Definition Camera - Direct Fitting to T804

T710 1" camera and adaptor for direct fitment on T804

The T710 camera can be fitted to the T804 rod using this adaptor - useful when the access is only 30mm

Pushrod Systems Only





CAMERA HEADS

T812 Pan and Tilt Camera

Our T812 Pan & Tilt camera is tough; machined from solid stainless steel, waterproof to IP68, 7 Bar, 100 psi and designed to operate on the T804 pushrod system.

The camera does not need to be pressurised to attain its waterproof status, no need for pumps or Nitrogen purging, the camera is sealed at the factory and will retain sealing integrity through its life.



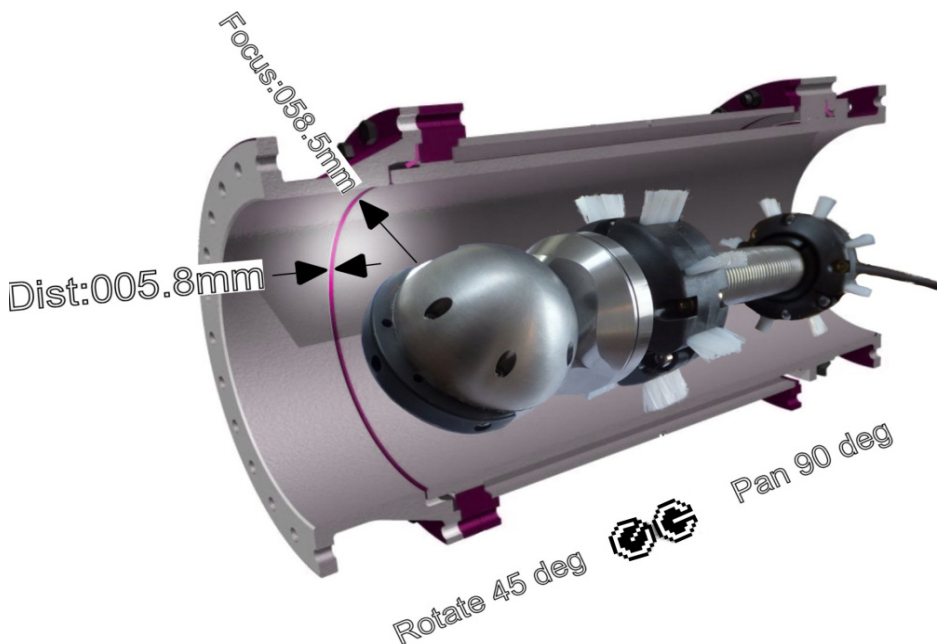
Pushrod and Crawler Use

T804 & T812 Measurement Software

Troglotech has found a simple way to measure defects in pipework that doesn't involve expensive lasers and post-survey calculations. With the Digital Lens System all you have to do is:

- Focus on the object you want to measure
- Move a marker on-screen
- Move a second marker on-screen
- That's it!

The measurement, object distance and position in the pipe is saved along with the survey video. It couldn't be easier, your customer can get accurate proof of the severity of any problems found during the survey. It may also be the proof that you need to carry out further work. No more guessing.



Pushrod and Crawler Use



CAMERA HEADS

T800 High-Definition Camera Head

T800 Auto-Uprighting High Definition CAMERA HEAD

Troglotech's T800 camera is the leader in the inspection industry with thousands in operation throughout the world. This forward View camera is supplied as standard on the T804 Trogloprobe. This camera can also be fitted to Pearpoint P370, P371 and P382.

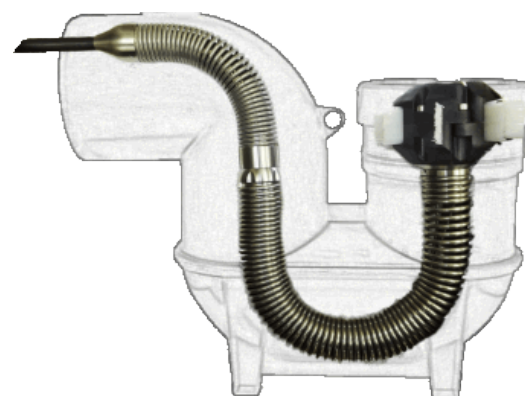


Pushrod Systems Only

Trogloprobe Flexitail

Trogloprobe Flexitail

Having problems getting through some of the new traps? We offer the Flexitail - which allows the camera to negotiate multiple tight bends with ease. The Flexitail can be used with the T800 Forward-View camera or the T812 Pan & Tilt camera. The Flexitail is simply fitted to the T804 Trogloprobe termination and the camera fitted to the other end



Pushrod Systems Only

T710 High-Definition Camera - Direct Fitting to T804

T710 1" camera and adaptor for direct fitment on T804

The T710 camera can be fitted to the T804 rod using this adaptor - useful when the access is only 30mm



Pushrod Systems Only



T804 Trogloprobe Accessories

T805 SONDES

Troglotech produce powerful in-line sondes for the T804 system for location purposes. These can be used with the T800 and T812 cameras

Available frequencies (Specify the frequency when ordering):

- 512Hz
- 32.768KHz

High Power sonde, 32.768KHz only, PT No TC80521011

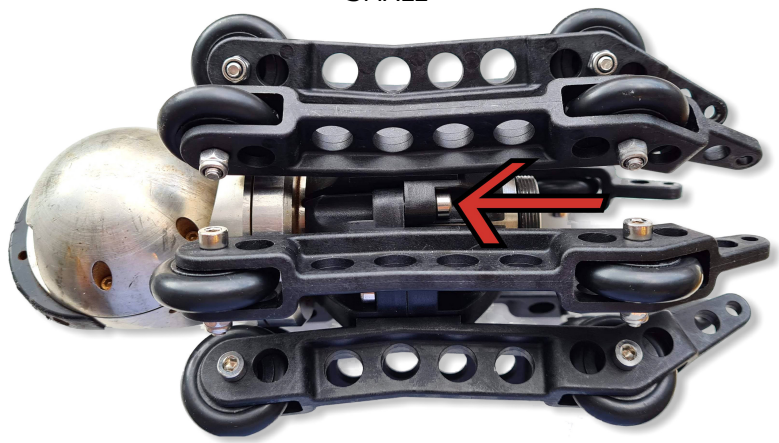


Pushrod Systems Only

LARGE



SMALL



NEW Roller Skids for Pan & Tilt and T800 Cameras

To push your camera further than with a brush-skid we have new roller skids, small and large. These are designed to be used in re-lined 6" and re-lined 8" pipes and are fitted with a single screw.

Pushrod Systems Only

SKID SETS

Skid sets:
We produce skid sets for our cameras, adaptors and sondes. Our design allows quick removal of the skids with the removal of a single Allen bolt. It also enables replacement of the individual brushes, which can be supplied in lengths suitable for use in 4" and 6" pipes. The Skids can be used without brushes for use in 3" pipe work.

Pushrod Systems Only

